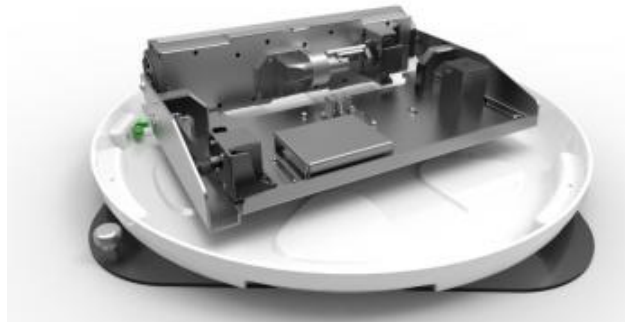


China Starwin CC30 & CL30

Vehicle Mounted Satellite TV Receive Antenna



General description

China Starwin's CC30 & CL30 Vehicle Mounted Satellite TV Receive antenna series is designed for car, long-distance bus, and touring car of broadband satellite signal receiving terminal, Using advanced navigation attitude System and servo control system, and make them perfect combination. Make the antenna fast and accurate to align to the satellite. To ensure the stability of the watching television programs on the vehicle what is running on the highway.

Features:

1. Multiple patent support
2. Platform stability, precision tracking
3. The transmission ratio of the antenna radome is as high as 98%
4. Anti power surge and lightning protection design
5. Support multiple TV and watch all TV programs at the same time

China Starwin Science & Technology Co., Ltd.

Tel: +8629-88664381, E-mail: sales@starwincom.com, <http://www.starwincom.com>

Copyright©2013 Starwin

Technical Specification :

Item	CC30	CL30
Working Frequency	11.7-12.2 GHz	10.7-12.75 GHz
Gain	30.5 dBi	
Antenna Type	Horn Array Antenna	
Min. EIRP	50 dBW	
Polarization	LHCP & RHCP	VLP & HLP
Stabilization Mode	2Axis	
Azimuth	Unlimited	
Elevation	0-90°	
Acquisition Time	≤30S	
Tracking Rate	100° /S	
Power Supply	+10-26 VDC	
Power Consumption	<30W	<35W
Working Temperature	-25°C-65°C	
Humidity	0-98%	
Waterproof Level	IP66	
Size	D:628mm, H:196mm	

China Starwin Science & Technology Co., Ltd.

Tel:+8629-88664381, E-mail:sales@starwincom.com, <http://www.starwincom.com>

Copyright©2013 Starwin